

Integrated Control Unit

Input Test

Remove the left kick panel cover, and under-dash fuse box, then disconnect the 22-P connector from the integrated control unit.

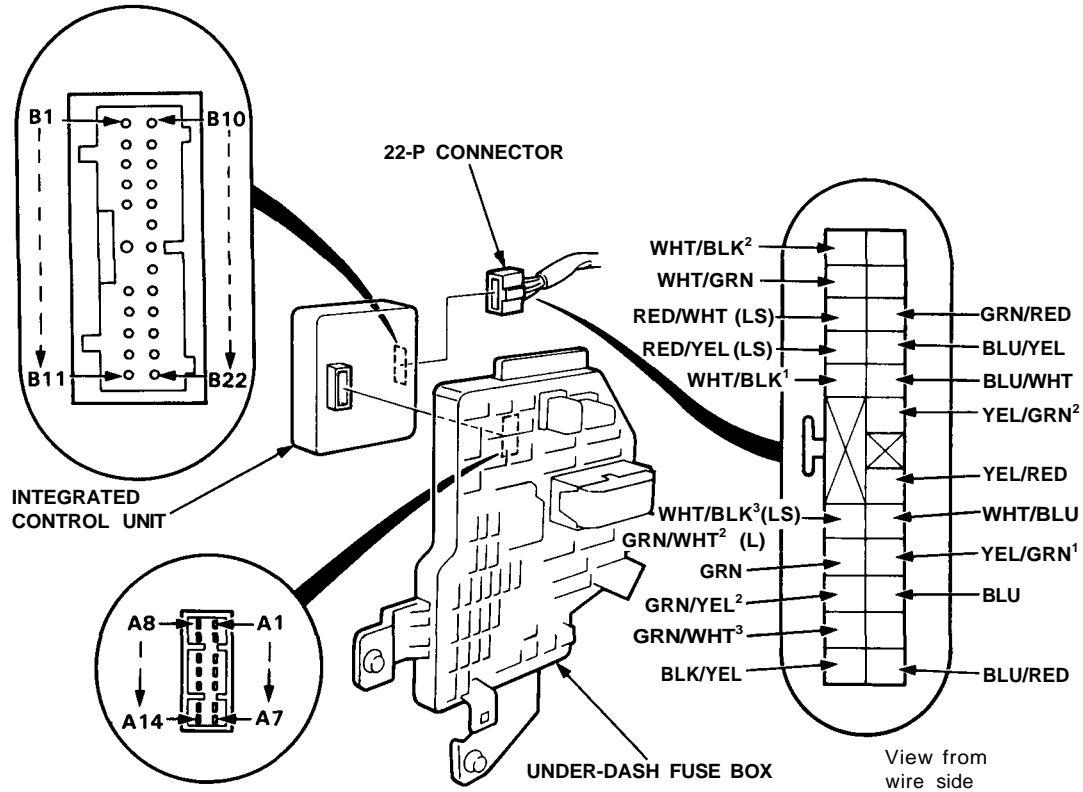
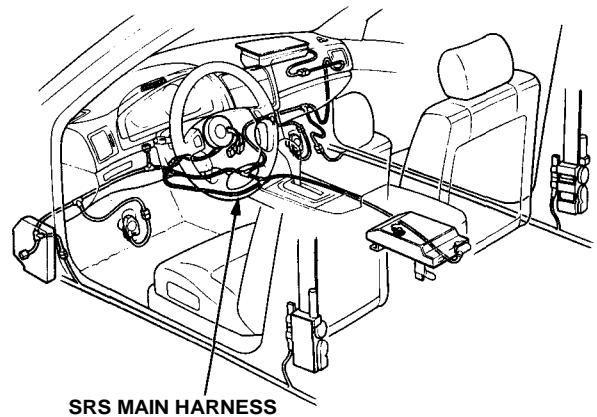
Remove the integrated control unit from the under-dash fuse box.

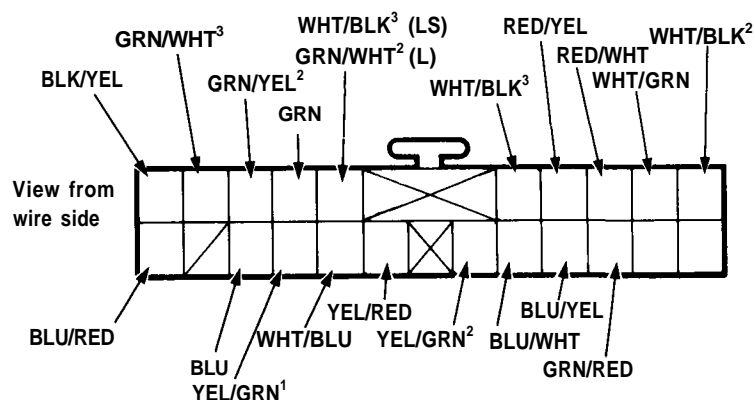
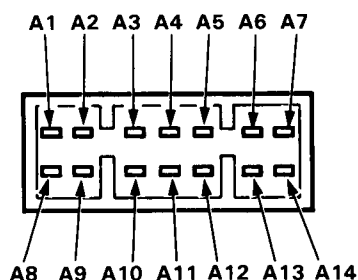
Make the following input tests at the connector terminals. If all tests prove OK, yet the system still fails to work, replace the control unit.

NOTE: Several different wires have the same color. They have been given a number suffix to distinguish them (for example, WHT/BLK¹ and WHT/BLK² are not the same).

CAUTION:

- All SRS wiring harnesses are covered with yellow outer insulation.
- Before disconnecting any part of the SRS wire harness, install the short connectors (see page 23-372).
- Replace the entire affected SRS harness assembly if it has an open circuit or damaged wiring.





All Systems:

No.	Terminal	Test condition	Test: Desired result	Possible cause (if result is not obtained)
1	A7	Under all conditions.	Check for continuity to ground: There should be continuity.	<ul style="list-style-type: none"> Poor ground (G251). An open in the wire.
2	A14	Under all conditions.	Check for voltage to ground: There should be battery voltage.	<ul style="list-style-type: none"> Blown No. 56 (7.5A) fuse. An open in the wire.
3	A2	Ignition switch ON.	Check for voltage to ground: There should be battery voltage.	<ul style="list-style-type: none"> Blown bulb or No. 13 (7.5A) fuse. An open in the wire.

Key-on Reminder:

No.	Terminal	Test condition	Test: Desired result	Possible cause (if result is not obtained)
1	A11	Driver's door open.	Check for continuity to ground: There should be continuity. NOTE: Before testing, remove No. 57 (15A) fuse.	<ul style="list-style-type: none"> Faulty left front door switch. An open in the wire.
2	BLU/WHT	Key inserted into the ignition switch.	Check for continuity to ground: There should be continuity.	<ul style="list-style-type: none"> Faulty ignition key switch. Poor ground (G301). An open in the wire.

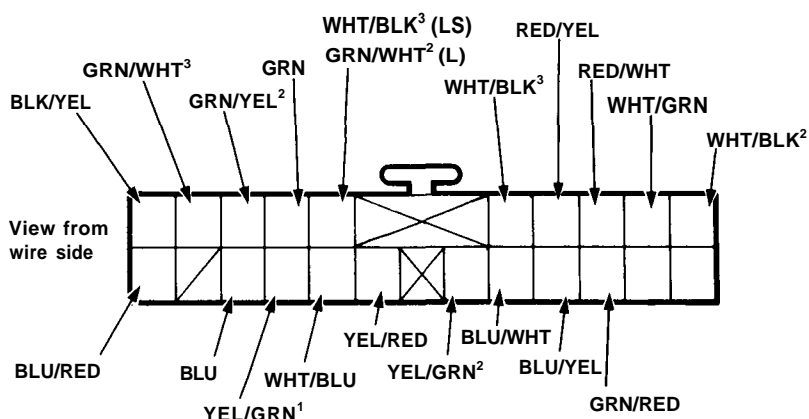
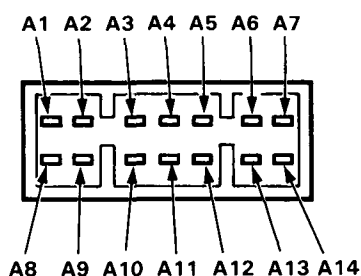
Lights-on Reminder:

No.	Terminal	Test condition	Test: Desired result	Possible cause (if result is not obtained)
4	All	Driver's door open.	Check for continuity to ground: There should be continuity. NOTE: Before testing, remove No. 57 (15A) fuse.	<ul style="list-style-type: none"> Faulty left front door switch. An open in the wire.
5	A6	Headlight switch ON.	Check for voltage to ground: There should be battery voltage.	<ul style="list-style-type: none"> Blown No. 49 (15) fuse. Faulty combination light switch. An open in the wire. Faulty taillight relay.
6	BLU	Connect the A14 terminal to the BLU terminal.	Check chime operation: Chime should activate each time the battery is connected.	<ul style="list-style-type: none"> Faulty chime. An open in the wire.

(cont'd)

Integrated Control Unit

Input Test (cont'd)



Seat Belt Reminder:

No.	Terminal	Test condition	Test: Desired result	Possible cause (if result is not obtained)
1	BLU/YEL	Driver's seat belt not buckled.	Check for continuity to ground: There should be continuity.	<ul style="list-style-type: none"> Faulty seat belt switch. Poor ground (G251). An open in the wire.

Rear Window Defogger Timer:

No.	Terminal	Test condition	Test: Desired result	Possible cause (if result is not obtained)
1	YEL/GRN ²	Defogger switch pushed.	Check for continuity to ground: There should be continuity as the switch is pushed.	<ul style="list-style-type: none"> Faulty defogger switch. Poor ground (G251). An open in the wire.
2	YEL/WHT	Ignition switch ON.	Connect to ground: Rear window defogger should work and the defogger switch indicator light should come on.	<ul style="list-style-type: none"> Blown No. 3 (15A) fuse. Faulty defogger relay. Blown bulb. An open in the wire.

Oil Pressure Indicator:

No.	Terminal	Test condition	Test: Desired result	Possible cause (if result is not obtained)
1	WHT/BLU	Engine running.	Check for voltage to ground: There should be battery voltage.	<ul style="list-style-type: none"> Faulty charging system. An open in the wire.
2	YEL/RED	Ignition switch OFF.	Check for continuity to ground: There should be continuity.	<ul style="list-style-type: none"> Faulty oil pressure switch. An open in the wire.
		Ignition switch ON.	Check light operation. If the light does not come on, attach the YEL/RED terminal to ground: The light should come on as the ignition switch is turned ON.	<ul style="list-style-type: none"> Blown bulb. An open in the wire.
		Start the engine.	Check for voltage to ground: There should be battery voltage.	<ul style="list-style-type: none"> Insufficient oil. Improper lubrication. Faulty oil pressure switch.



Side Marker Light Flasher:

No.	Terminal	Test condition	Test: Desired result	Possible cause (if result is not obtained)
1	A6	Headlight switch to ON.	Check for voltage to ground: There should be battery voltage.	<ul style="list-style-type: none"> • Blown No. 49 (15A) fuse. • Faulty combination light switch. • An open in the wire.
2	A12	Ignition switch to ON, and turn signal switch in left position.	Check for voltage to ground: There should be battery voltage.	<ul style="list-style-type: none"> • Blown No. 13 (7.5A) fuse. • Faulty turn signal system. • An open in the wire.
3	A13	Ignition switch to ON and turn signal switch in right position.		
4	A1 A8	Connect the A14 terminal to the YEL (or BLU) terminal.	Check marker light operation: Left (or right) front side marker light should come on.	<ul style="list-style-type: none"> • Blown bulb. • Poor ground (G152 or G153). • An open in the wire.

Power Window Key-off Timer:

No.	Terminal	Test condition	Test: Desired result	Possible cause (if result is not obtained)
1	A11 GRN/RED	Left front door open. Right front door open.	Check for continuity to ground: There should be continuity. NOTE: Before testing, remove No. 57 (15A) fuse.	<ul style="list-style-type: none"> • Faulty door switch. • An open in the wire.
2	A4	Connect the A4 terminal to the A14 terminal.	Check window operation: Power windows should operate.	<ul style="list-style-type: none"> • Faulty power window relay. • Poor ground (G301). • An open in the wire.

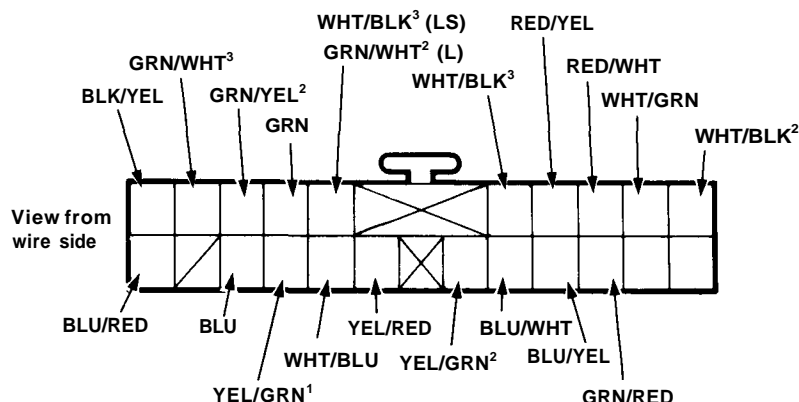
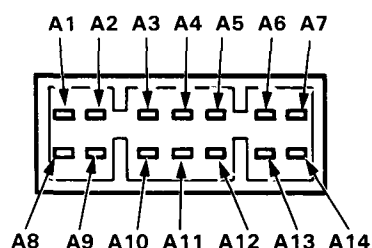
Intermittent Wiper:

No.	Terminal	Test condition	Test: Desired result	Possible cause (if result is not obtained)
4	BLU/RED	Ignition switch to ON.	Check for voltage to ground: There should be battery voltage.	<ul style="list-style-type: none"> • Blown No. 23 (7.5A) fuse. • Faulty intermittent relay. • An open in the wire.
5	GRN	Ignition switch to ON, and wiper switch INT.	Check for voltage to ground: There should be battery voltage.	<ul style="list-style-type: none"> • Blown No. 23 (7.5 A) fuse. • Faulty wiper switch. • An open in the wire.
6	BLK/YEL	Ignition switch to ON, and washer switch ON.	Check for voltage to ground: There should be battery voltage.	<ul style="list-style-type: none"> • Blown No. 23 (7.5A) fuse. • Faulty washer switch. • An open in the wire.
7	GRN/YEL ² GRN/WHT ³	Intermittent dwell time control ring turned.	Check for resistance between the terminals: It should vary from 0 to 30,000 ohms as the ring is turned.	<ul style="list-style-type: none"> • Faulty intermittent dwell time controller. • An open in the wire.
8	A9	Ignition switch to ON, wiper switch OFF	Check for voltage to ground: There should be battery voltage.	<ul style="list-style-type: none"> • Faulty wiper motor (automatic-stop circuit). • An open in the wire.

(cont'd)

Integrated Control Unit

Input Test (cont'd)



Entry Light Control:

No.	Terminal	Test condition	Test: Desired result	Possible cause (if result is not obtained)
1	A11	Driver's door open.	Check for continuity to ground: There should be continuity. NOTE: Before testing, remove No. 57 (15A) fuse.	<ul style="list-style-type: none"> Faulty door switch. An open in the wire.
	GRN/RED	Right front door open.		
2	BLU/WHT	Key inserted into the ignition switch.	Check for continuity to ground: There should be continuity.	<ul style="list-style-type: none"> Faulty ignition key switch. Poor ground (G301). An open in the wire.
3	WHT/BLK¹	Under all conditions.	Connect to ground: Foot well lights and rear courtesy lights (LS model) should come on.	<ul style="list-style-type: none"> Blown bulb. An open in the wire.
4	WHT/BLK²	Under all conditions.	Connect to ground: Ignition key light should come on.	<ul style="list-style-type: none"> Blown bulb. An open in the wire.
5	WHT/BLK³ (LS model)	Under all conditions.	Connect to ground: Front courtesy lights should come on.	<ul style="list-style-type: none"> Blown bulb. An open in the wire.
6	GRN/WHT² (L model)	Ceiling light switch in MIDDLE.	Connect to ground: Ceiling lights, front and rear courtesy lights should come on.	<ul style="list-style-type: none"> Blown bulb. Faulty ceiling light relay. An open in the wire.
7	A10 (LS model)	Ceiling light switch in MIDDLE.	Connect to ground: Ceiling lights should come on.	<ul style="list-style-type: none"> Blown bulb. An open in the wire.
8	RED/WHT (LS model)	Courtesy light controller ring turned.	Check for resistance between the terminals: It should vary from 0 to 20,000 ohms as the ring is turned.	<ul style="list-style-type: none"> Faulty courtesy light controller. An open in the wire.
	RED/YEL (LS model)			
9	WHT/GRN	Under all conditions.	Connect to ground: Driver's door key cylinder light should come on.	<ul style="list-style-type: none"> Blown LED. An open in the wire.
10	YEL/GRN¹	Driver's door outside handle pulled.	Check for continuity to ground: There should be continuity.	<ul style="list-style-type: none"> Faulty driver's door outside handle switch An open in the wire.
11	A6	Headlight switch ON.	Check for voltage to ground: There should be battery voltage.	<ul style="list-style-type: none"> Blown No. 49 (15) fuse. Faulty combination light switch. An open in the wire. Faulty taillight relay.